



DIGITAL LOCKS



EURO-LOCKS
LOCKING SYSTEMS FOR INDUSTRY



DIGITAL LOCKS FROM EURO-LOCKS

Designed to complement traditional locking products, the Euro-Locks range of digital and electronic locks are an ideal solution for your locking requirements.

With many different designs and features, these advanced locking systems offer convenience and reliability for any commercial or industrial application.

The digital and electronic locks we manufacture eliminate the need for user keys and so vastly reduce associated costs. The wide range of functionality these locks offer give users increased flexibility in the control and access of their personal storage and wider environment.

They also help to facilitate flexible working and hot desking, which are essential tools in the modern workplace.

Common applications include lockers, wooden office furniture, metal office furniture, enclosures and postal and delivery systems.

Euro-Locks is part of the Lowe & Fletcher Group who have been designing, manufacturing and supplying locking systems for commercial and industrial applications since 1889. Call today and speak to the experts.



**For more information on digital locks or
Euro-Locks range of locking solutions
please see below:**

Call: +32 61 212.261

Visit: www.euro-locks.be

Horizon
digital combination lock

Pulsar
RFID locks

Zenith
digital combination locks

Eclipse
digital combination locks

Gemini
digital and mechanical locks



Horizon

digital combination lock



Product ID: 3950

DIGITAL COMBINATION LOCK

Horizon is a slimline, small footprint lock with an ultra-modern look and feel. Designed for use on lockers, cabinets, delivery boxes and general enclosures, it is easy to install and simple to operate. The lock has an impressive range of advanced features including: remote management of lock codes, audit trail and a cloud based configuration portal.

The pop-out handle offers additional security and the coloured indicator ring shows at a glance if the lock is in use or available. The unique mechanical override key permits managerial access in the event of an emergency and an impressive range of custom colours to complement any environment.

Standard Features

- Vertical, left and right hand fixing
- Flush or surface fixing
- 20mm or 24mm spindle length
- Public, Private & Remote Allocation operating modes
- Secure pop-out turn handle (flush when locked)
- Coloured indicator ring
- Mechanical override lock
- LED battery condition indicator
- Audible button tones
- Auto unlock/lock
- ADA/DDA compliant
- Standard CR123 lithium battery (included)
- Wide variety of cams
- Available in black or white as standard
- Custom colours available on request



Pulsar

RFID locks





Product ID: 3786



Product ID: 3787

CONTACTLESS LOCK

The Pulsar RFID digital lock provides contactless locking in a slim and attractive footprint and utilises the high strength benefits of the synthetic material Grivory.

Manufactured in the UK, Pulsar is compatible with RFID standards and comes with a wide range of accessories and options, making it simple to upgrade existing installations where required.

Typical applications include commercial and office environments, lockers and enclosures.

Standard Features

- Black lock and escutcheon
- Mechanical override lock
- Wide variety of cams
- Battery condition indicator
- 17mm, 20mm, 21mm or 24mm spindle length – 3786 only
- 16mm or 20mm spindle length – 3787 only
- 2 x AA batteries (included)
- Vertical, left and right hand fixing

Programming Options

- Change Master Card
- Add User Card
- Delete all User Cards
- Delete single User Card with User Card
- Delete single User Card without User Card
- Set Private Mode
- Set Public Mode
- Set audio
- Auto unlock mode

Optional Features

- Customised logo
- Alternative finishes to escutcheon
- Pre-programmed modes and card installation



Zenith 
digital combination locks

DIGITAL COMBINATION LOCK

With a solid zinc alloy housing, ten-digit keypad, multiple fixing points and a secure key override as standard, the Zenith digital lock is the perfect choice for a wide variety of applications.

The Zenith range of locks is truly versatile and includes flush and surface mount form, a slam bolt closing option, a lock that is designed specifically for use in wet and chlorinated areas and an ADA/DDA compliant lock.

All of these locks can be used with RAS (Remote Allocation System) which adds the ability to remotely manage the locks, eliminating site visits. For further information on the RAS system, please see page 14. Supplied with a wide choice of cams, this lock is suitable for numerous applications including lockers, cupboards, medical cabinets, furniture and other enclosures.

Standard Features

- Black, silver or white colour
- Mechanical override lock
- Two or three point fixing
- Wide variety of cams
- LED indicator lights
- Audible keypad
- Battery condition indicator
- 8-digit master code
- 6-digit sub-master code
- 4-digit user code
- Private or public user modes
- 20mm or 24mm spindle length
- Auto unlock mode
- Auto lock mode
- Technician mode

- 2 x AA batteries (included)
- Vertical, left and right hand fixing

Optional Features

- Can be used with coin operated locks
- Available with Remote Allocation System (RAS)
- Slam bolt
- Door open alarm
- Alternative colours
- Pre-programmed modes and codes
- Customised logo

All Product ID: 3780



Eclipse

digital combination locks



Product ID: 3760

ECLIPSE FURNITURE LOCK

This innovative digital combination lock can be retro-fitted to office furniture and provides a clear upgrade path for new and refurbished office furniture. Working with a removable cylinder, the lock fits neatly into the aperture left in the furniture when the old cylinder is removed.

The lock is also ideal for use in modern office environments where employees work flexibly and move around different areas or sites and do not have allocated desks.

Personal and temporary storage for employees' belongings and delivery of mail can be provided by banks of lockers as well as traditional pedestals.

Featuring a solid zinc alloy housing, ten-digit keypad, multiple fixing points and a secure mechanical key override, this digital combination lock is the perfect choice for any office environment.

Standard Features

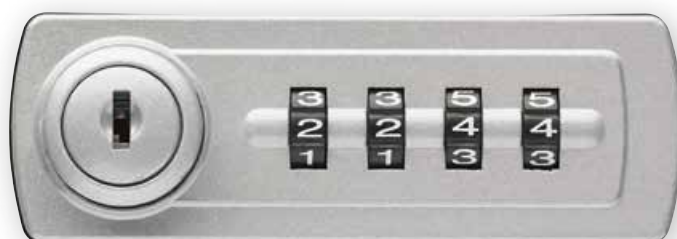
- Retro-fits to existing systems which incorporate a removable cylinder
- Simple fitting to new furniture
- Easy to fit with adapter and two screws
- Vertical, left and right hand fixing
- Mechanical override lock
- LED Indicator lights
- 1 x AAA Battery (included)
- Battery condition indicator
- 8 Digit master code
- 4 Digit user code
- Black, silver or white colour
- Wide variety of cams
- Private or public user modes
- ADA/DDA compliant



GeminiDC
digital and mechanical locks



Product ID: 3700



Product ID: 2700

NO MORE LOST KEYS

Manufactured in the UK to exacting standards, the Gemini is available in either digital or mechanical form. Both versions share the same profile and fixing template, giving maximum flexibility and choice at the point of installation.

A truly adaptable solution. This innovative lock range is available in both flush and

surface mount form and in a choice of standard or custom colours.

The small footprint and option of vertical or horizontal orientation make Gemini the perfect choice for a wide range of applications, including lockers, cabinets and cupboards.

Digital Standard Features

- Black, silver or white colour
- Flush or surface mounting
- Vertical, left and right hand fixing
- Four digit User Code
- Public or private modes
- LED indicator lights
- Battery condition indicator
- Mechanical override lock
- Wide variety of cams

Product ID: 3700

Mechanical Standard Features

- Black, silver or white colour
- Flush or surface mounting
- Vertical, left and right hand fixing
- Four digit User Code
- Lost code finder key
- Easy code change
- Wide variety of cams

Product ID: 2700

RELATED PRODUCTS



REMOTE ALLOCATION SYSTEM (RAS)

The RAS system is a simple and secure solution that allows you to remotely manage access without the need to go to site. It gives the system manager the ability to assign user codes using an online database. This dispenses with the need for users to carry keys and reduces running costs by removing the need for service calls to change lock codes locally.

Management of the locks is via a simple web-based system. This can be accessed from any location with the usual range of desk based and hand-held devices. If the organisation is managing multiple installations, all of these are controlled from this one convenient website.

Once online, the manager is able to see at a glance which locks are currently available and allocate these to new users, allowing immediate and simple keypad access without the need for a key.

Typical applications include:

Business

Many businesses are now offering home and flexible working arrangements, so the need to use a variety of desks and working areas is becoming both popular and desirable. By using the RAS system, a business can provide secure personal storage and remotely allocate access for staff who require a locker for a temporary period.

Leisure

Hotel spa and gymnasium customers often struggle to find suitable coins when using temporary lockers. The RAS digital combination lock removes this frustration by issuing the customer a 4-digit code which remains valid for the duration of their visit. This code is handed to the customer at the reception desk, together with the locker location.

Education

Many schools and colleges now provide lockers and personal storage as a chargeable option. The RAS system allows the student to rent and pay for the service via a website. The service provider then sends a text or email to the student with their locker location and code number. At the end of term, the next user code is then remotely allocated to the new student without the need to reprogram the lock.



Contact:

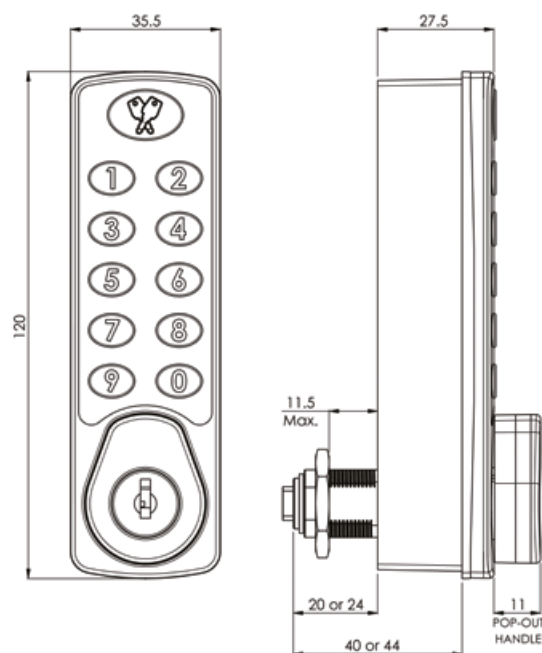
Tel: +32 61 212.261 or

Email: sales@euro-locks.be

www.euro-locks.be

TECHNICAL APPENDIX

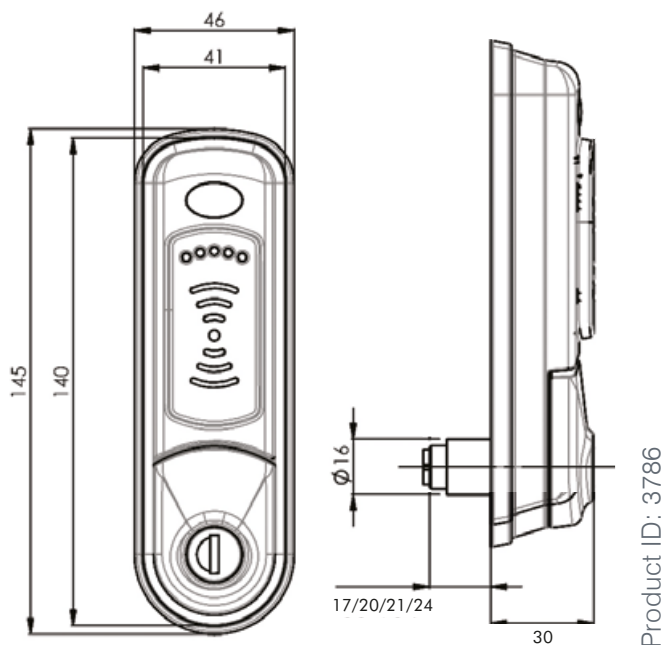
This section contains basic technical information and drawings related to the products featured. For more detailed information on these products please contact us on [+32 61 212.261](tel:+3261212261) or email sales@euro-locks.be .



Product ID: 3950

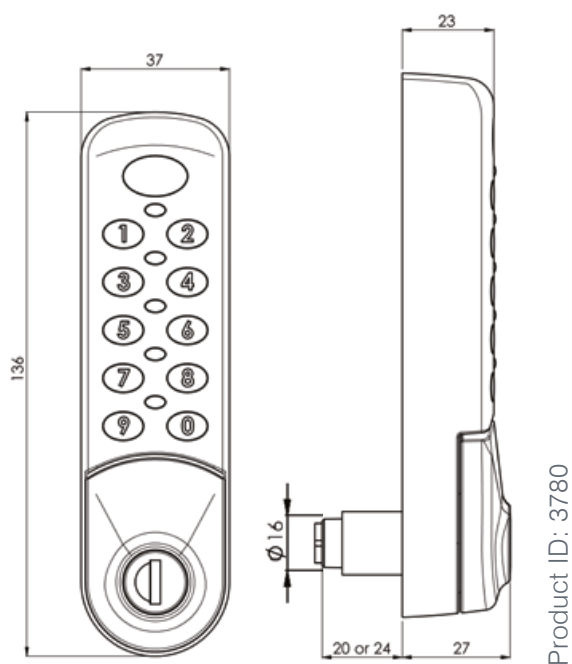
Pulsar

RFID lock



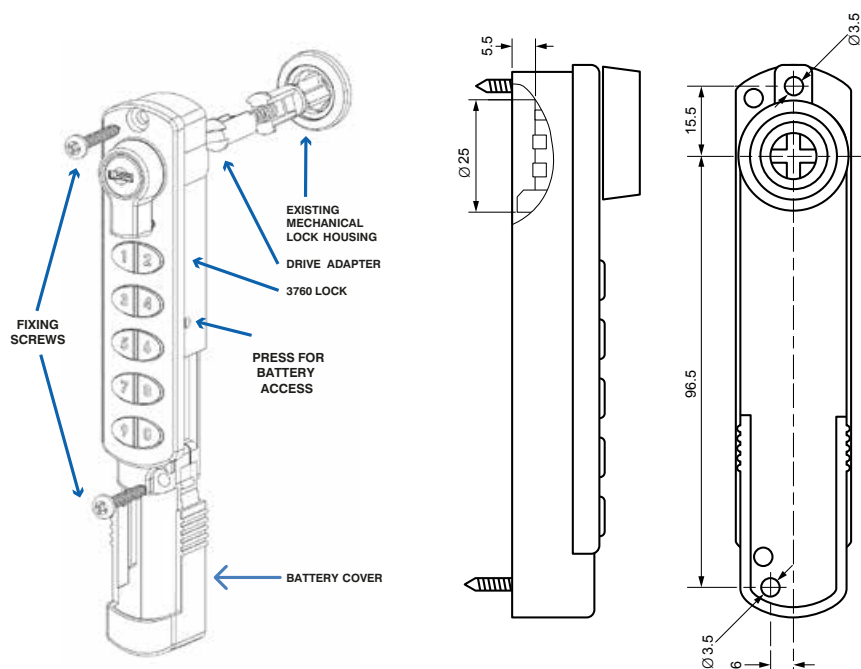
Zenith

digital combination locks



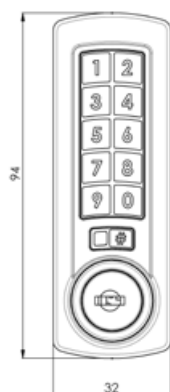
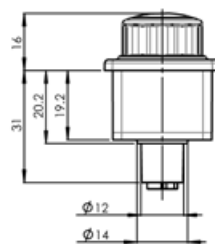
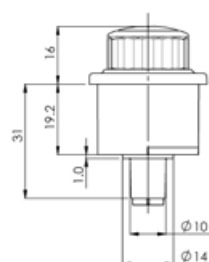
Eclipse

digital combination lock

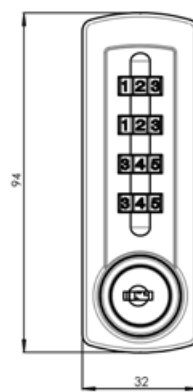


Gemini

digital and mechanical locks



Product ID: 3700



Product ID: 2700

ABOUT US

Euro-Locks is a leading global manufacturer of locking systems for industry. You can buy from Euro-Locks with confidence knowing that:

- We manufacture over 65 million locking systems annually from our European and UK factories
- We offer a vast range of quality locking solutions to a highly diverse customer base
- We work closely with our customers to design bespoke locking solutions specific to their exact requirements
- We can supply standard or bespoke products in high or low volumes
- We have a dedicated team with many years' experience in the locking systems industry
- We have made locks since 1889 and are a fifth generation family owned business

Please explore our other products



Camlocks



Pin Tumbler
Locks



Coin Locks



Mechanical
Combination Locks



Euro-Locks SA NV
Rue de la Fontaine 8
6600 Bastogne

T: +32 61 212.261
F: +32 61 212.265
E: sales@euro-locks.be
W: www.euro-locks.be

L&F A Lowe & Fletcher Group Company